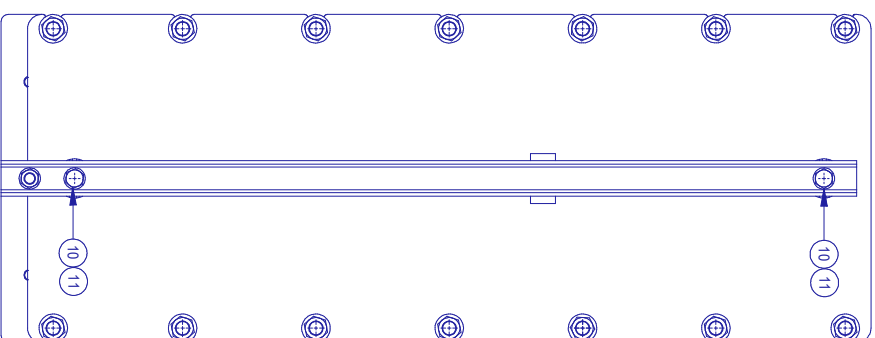
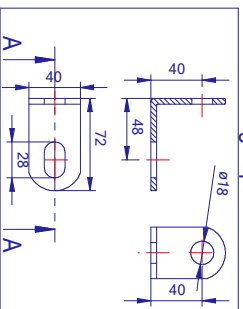


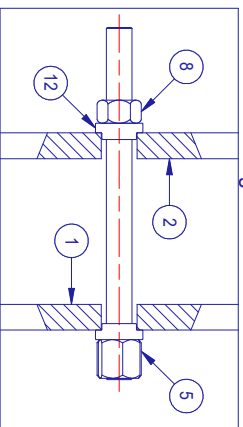
530/730/1030/1280/1530 - PN10



Dettaglio piedini

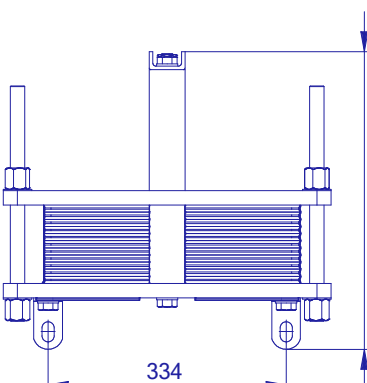


Dettaglio Tiranti M20



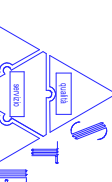
L + 72

334



| Quota di serraggio (Q)mm - Numero Piastre x (2,4 + sp. piastre) | | | |
|---|---------------|-------------------|---------|
| N° piastre | Guida piastre | Lunghezza tiranti | S |
| 5- 41 | 700 mm | 600 mm | 30 PN10 |
| 42- 83 | 700 mm | 700 mm | 40 PN10 |
| 84- 135 | 1000 mm | 1000 mm | 40 PN16 |
| 136- 201 | 1280 mm | 1300 mm | 40 PN16 |

Scambiatore a Piastre - SP35T



S.T.B. DIVISIONE WINTER

S.T.B. Divisione Winter
 Via Emilia 4/9R - Italia
 46136 Geronova - Italia
 P. Via 03102089101

<http://www.abbastico.com>
abbastico@abbastico.com
 T. el. +39 0176 832684/840
 Fax +39 0176 8326974

Copyright: S.T.B. Divisione Winter
 414 - 3.9981 - REV. 01/23