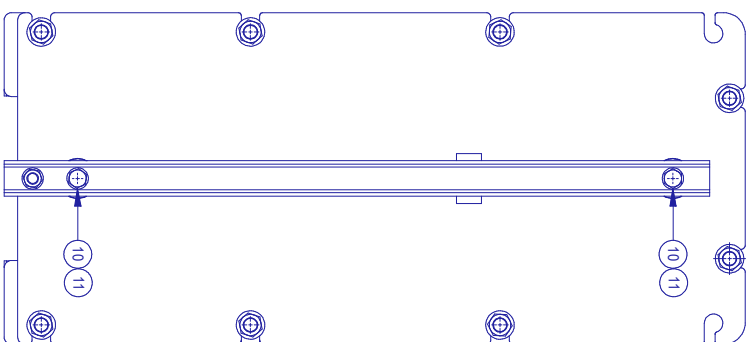
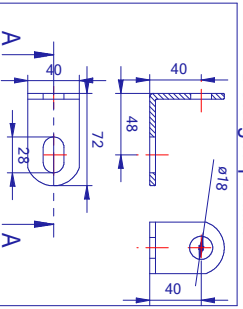


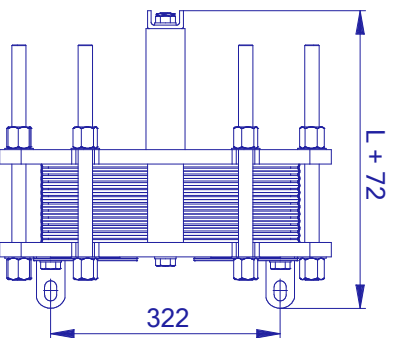
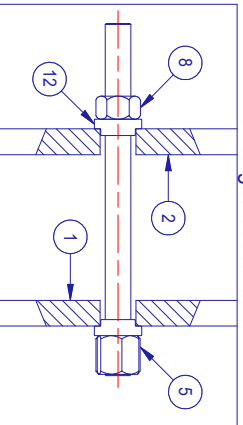
530/730/1030/1280/1530 PN10



Dettaglio piedini



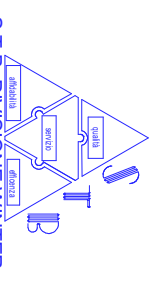
Dettaglio Tiranti M24



Quota di serraggio (Q)mm - Numero Piastre x (2.6 + sp. piastre)			
N° piastre	Quota serraggio	Lunghezza tiranti	S
5- 4.1	760 mm	600 mm	30 PN10
4-2- 8.3	760 mm	700 mm	40 PN10
84- 1.5	1000 mm	1000 mm	40 PN16
	1280 mm	1300 mm	40 PN16
136- 2.01	1280 mm	1300 mm	40 PN16

**Scambiatore a Piastre - SP24T**

N°	Descrizione (denominazioni)
1	Plastrone Anteriore (Piastra d'Ingresso)
2	1 Plastrone Posteriori (Piastra di Uscita)
3	1 Plastrone Posteriori (Piastra di Uscita)
4	1 Guidastrutture alto (Upper Beam) 450
5	1 Guidastrutture basso (Lower Beam) 450
6	8 Tiranti M24 S1 B1 (Upper/Down)
7	8 Tiranti M24 S1 B1 (Upper/Down)
8	8 Tiranti M24 S1 B1 (Upper/Down)
9	2 Viti regolatorie M16x30 (Lower screw)
10	2 Viti regolatorie M16x30 (Lower screw)
11	2 Viti regolatorie M16x30 (Lower screw)
12	16 Piedini M16 (1030)
13	1 Piedini M16 (1030)
14	3 Piedini



S.T.B. Divisione Winter  
 Via Emilia 4/9R - Italia  
 P.le via 03102009101  
 Formaleto A3 Scala 1.7.5  
 Copyright: S.T.B. Divisione Winter  
 http://www.stbitaliano.com  
 stbitaliano@stbitaliano.com  
 T. tel. +39 010 8326840  
 Fax +39 010 8326974