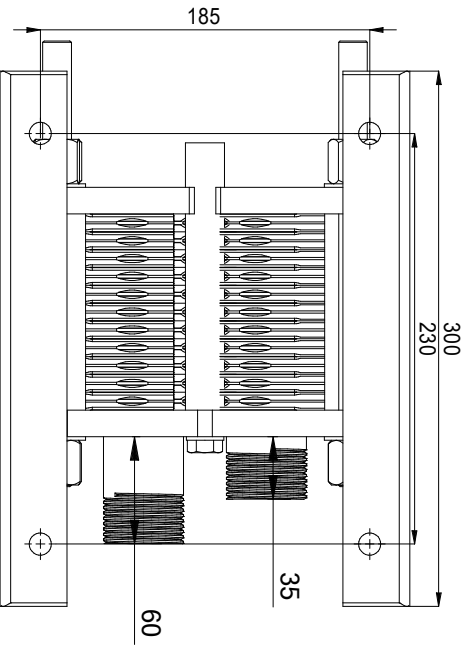
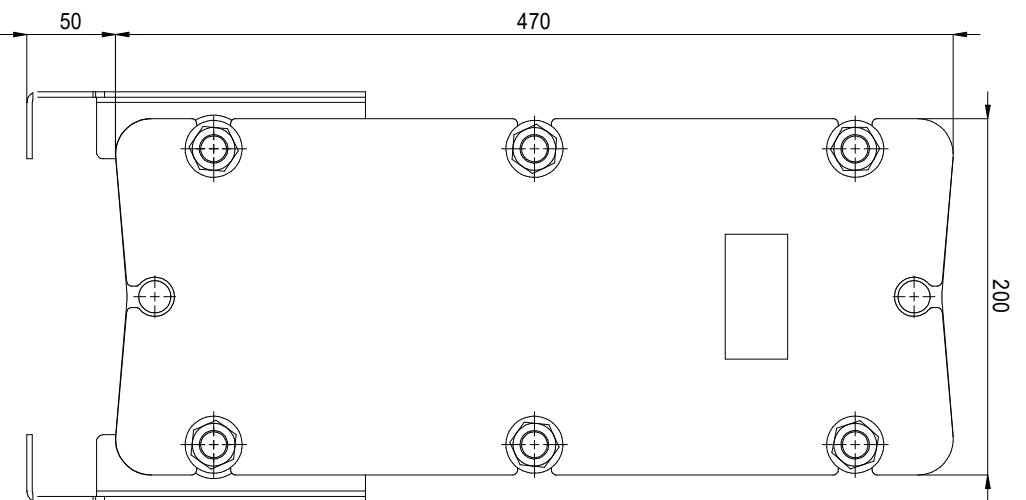
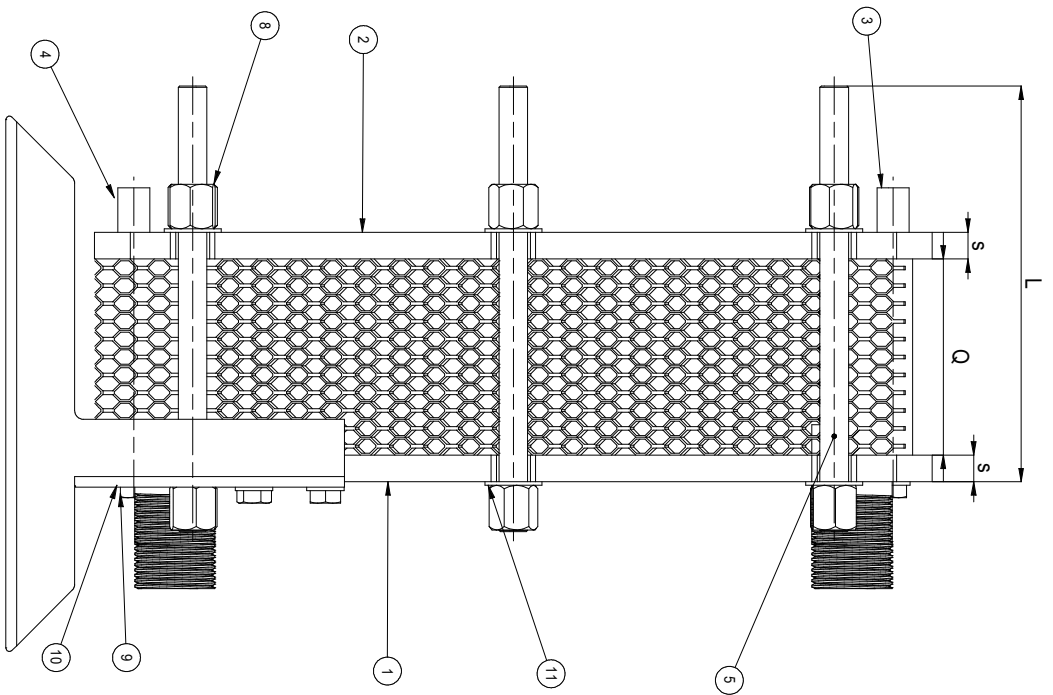
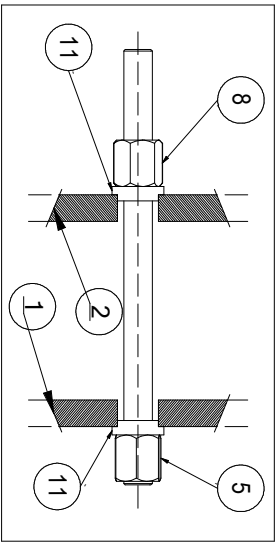


**Dettaglio tirante**



**Quota di serraggio (Q)mm - Numero Piastre x (2.4 + sp. piastre)**

N° Piastre	Lunghezza guida piastre	Lunghezza tiranti	Lunghezza L	S
5 - 31	350	200	775(PN10)	15 PN10
32 - 67	300	330	905(PN10)	20 PN16

**Scambiatore a Piastre - SP04**

№	Descrizione (denomination)
1 1	Piastrone Antivibratore (base plate)
2 1	Piastrone Predisettore (base plate)
3 1	Guidapiastre alto (upper beam) ø18
4 1	Guidapiastre basso (lower beam) ø18
5 1	Tirante M16 STB (Spheren bolt)
6 2	Placca M16 STB (cover plate)
7 2	Boccole L75 1.1/4" (nut)
8 6	Diap. M16 (nut)
9 2	Vite M10x30 (screw)
10 2	Rondella M10 (washer)
11 1/2	Boccole M16 STB (bush)

**S.T.B. DIVISIONE WINTER**

STB Divisione Winter  
 Via Emilia 40R  
 16138 Genova - Italia  
 P.IVA 03102890101  
<https://www.stblastico.com>  
 stblastico@stblastico.com  
 Tel. +39 010 8389640  
 Fax +39 010 8382974

Formato | A3 | Scala | 1:3  
 Copyright STB Divisione Winter  
 Ed. 0/23