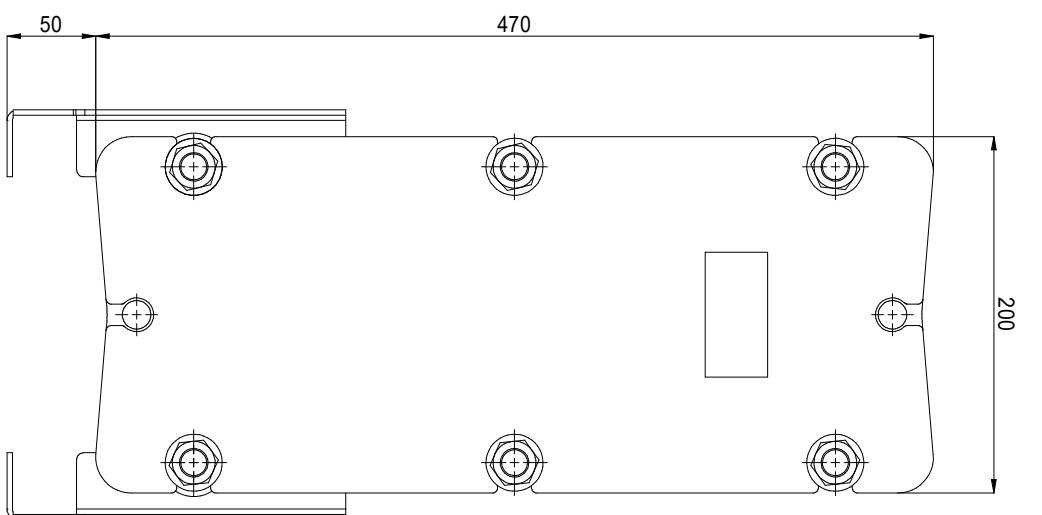
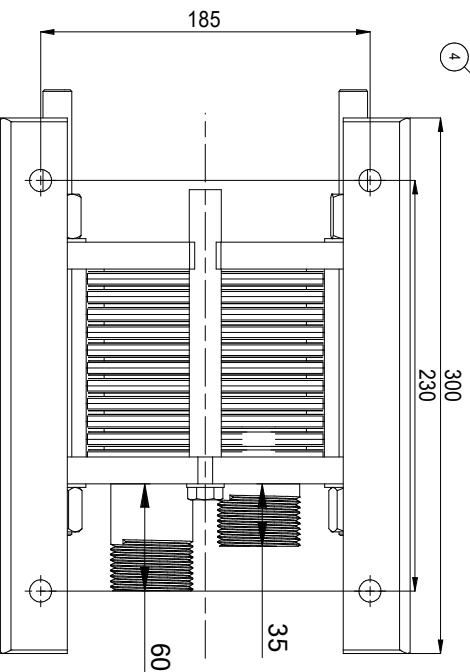
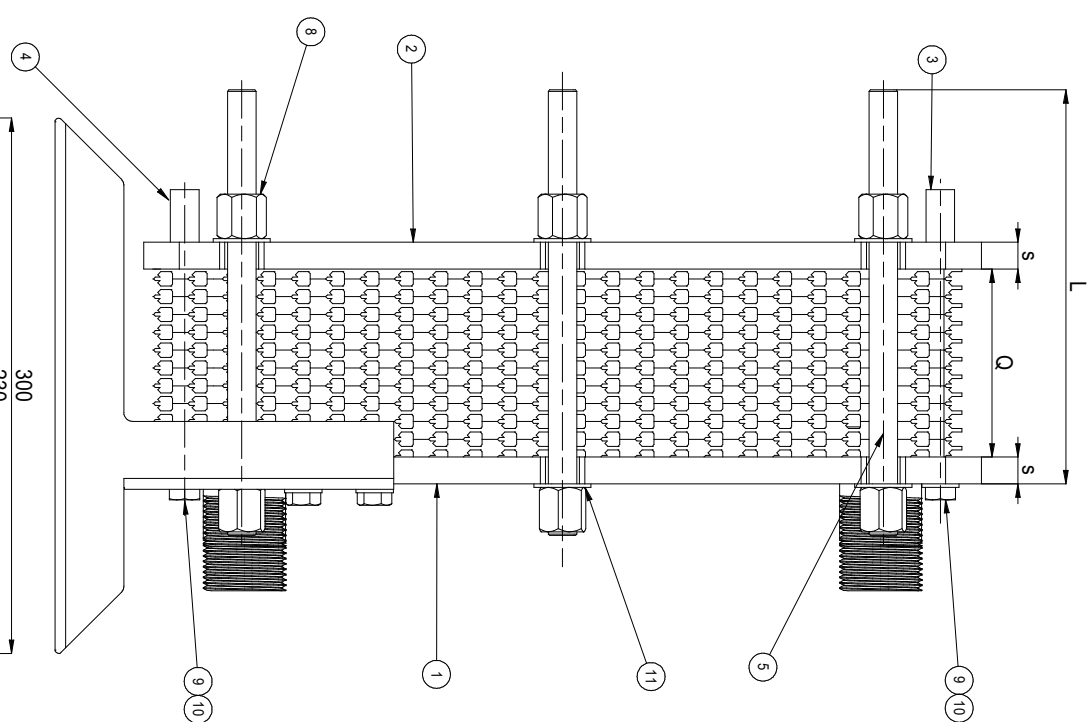
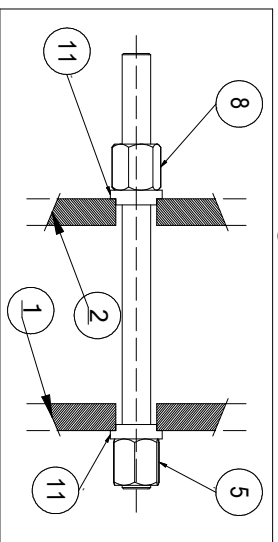


Dettaglio tirante



Quota di serraggio (Q)mm - Numero Piastre x (2.5 + sp. piastre)

N° Piastre	Lunghezza guida piastre	Lunghezza tiranti	Lunghezza L	S
5 - 31	350	200	T75/PN10	15/PN10
32 - 67	300	330	305/PN10	20/PN16

Scambiatore a Piastre - SP03

№	Descrizione (denominazione)
1	11 Piastrone Antivortice (lame plate)
2	11 Piastrone Postivortice (loose plate)
3	11 Guidastrato alto (upper beam) ø16
4	11 Guidastrato basso (lower beam) ø16
5	11 Tirante M16 STB (Spheren bolt)
6	2 Boccole M16 STB (Spheren nut)
7	2 Boccole T25 1.147 (OZZARO)
8	6 Dado M16 (nut)
9	2 Vite M10x30 (screw)
10	2 Rondella M10 (washer)
11	112 Boccole M16 STB (Bush)

S.T.B. DIVISIONE WINTER srl
 STB Divisione Winter
 Via Emilia 40R
 16138 Genova - Italia
 P.Iva 03102890101
 https://www.stb.it
 stb@stb.it
 Tel. +39 010 8389640
 Fax +39 010 8382974
 Copyright STB Divisione Winter
 Rev. 0/23

Formato A3 Scala 1:3
 data: 2023