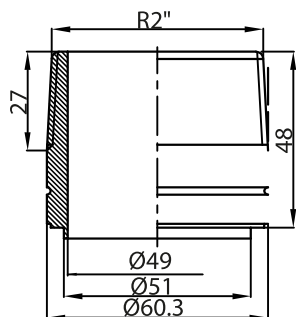


R2" Connection(L024)



SP - S76

SP - S76	
Design pressuer(MPa)	3.0
Testing pressuer(MPa)	4.5
Design Temperature(°C)	-196 ~ +200 °C
Volume(L)	F1F2side:4.20 ;F3F4side:3.99
Heat transfer area(m ²)	3.61
Weight(kg)	22.96
Customer Part No.	